



B
B

B
P

✔ Pursue your interests and maximise your employability with a joint degree in Business and Psychological Science. Learn business operations and decision-making skills alongside critical thinking and research methods.

✔ Cultivate a balance between academic theory and practical ability—valuable to employers both in psychology and business. Develop an in-depth understanding of how human psychology impacts business. Transfer your skills across industries or specialise in one area of expertise.

✔ Study a curriculum designed by industry experts to ground your learning in contemporary research and real-world relevance. Take part in practical experiences in current research and industry internships.

COURSE DETAILS:

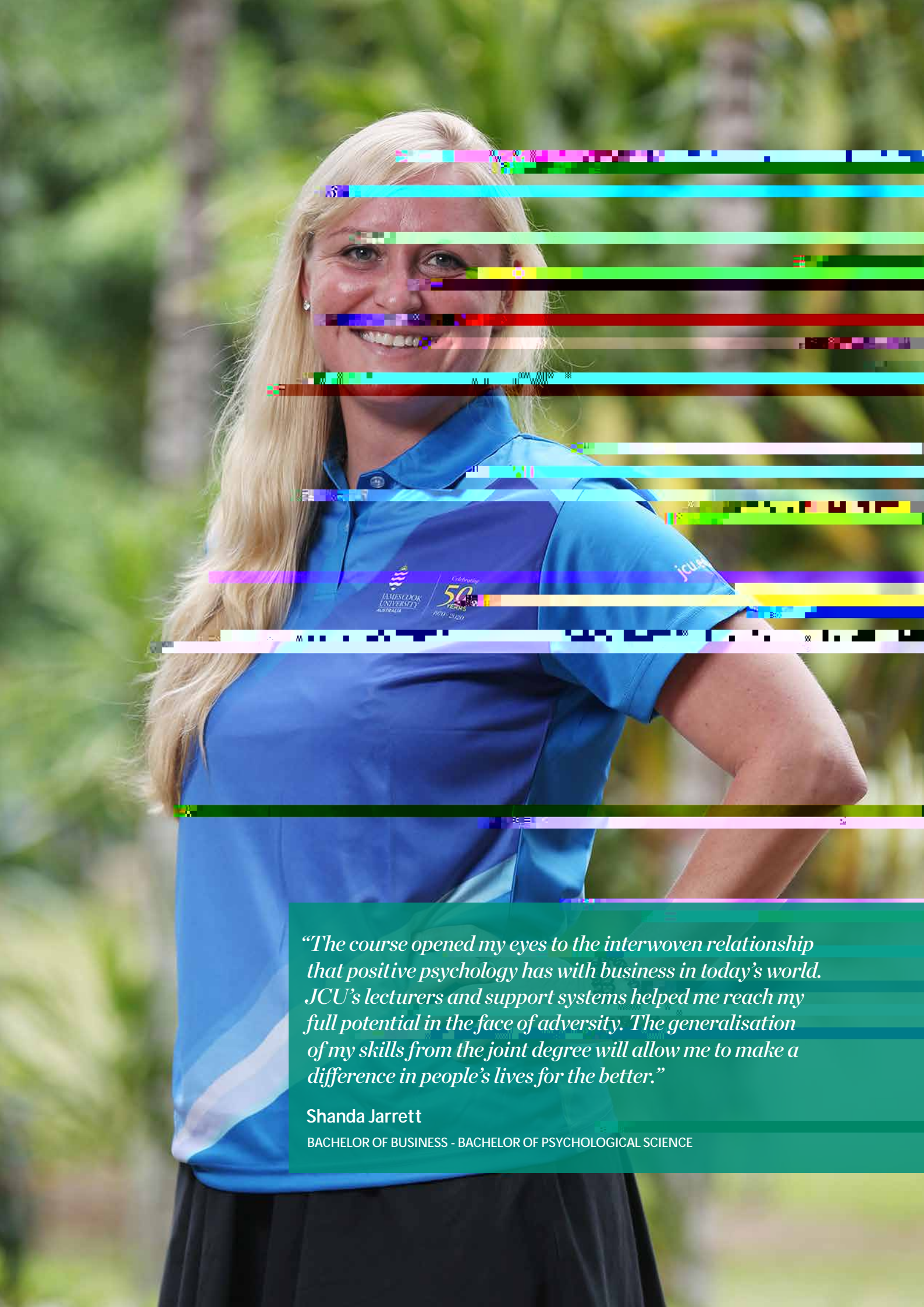
Locations: $\sigma \tau \rho$
 Start Dates: $\sigma \tau \rho$
 Duration: $\sigma \tau \rho$
 ATAR: $\sigma \tau \rho$
 Prerequisite: $\sigma \tau \rho$

$\sigma \tau \rho$

R

σⁿ l t σ bσ n t n σ f b 'σ n' σ² σ
b σ l t - b t n t σ b t σ f σ t σ σ
b σ f l σ n σ n f σ f f σ n f l σ n ,

σ n σ σ b σ b n n f n t f l σ n σ t σ n
t n σ , n b σ n σ n l σ f n σ b σ σ n n f b n l σ f .
n t t σ σ b n f σ t l n σ t n σ n n f n n l σ f
t b n σ n σ f σ t l n σ t l n b n σ

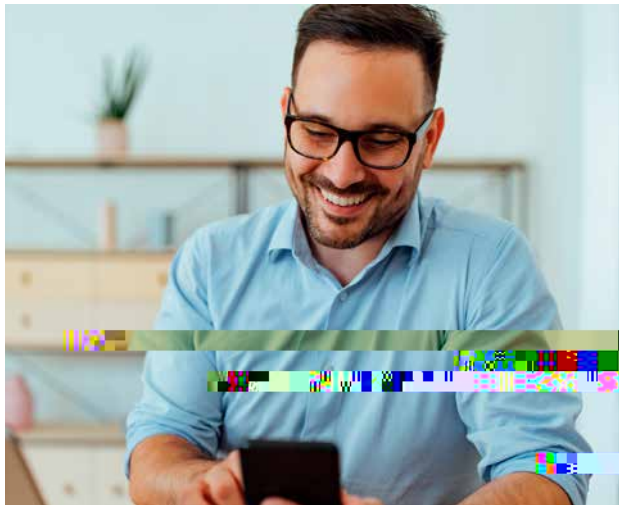


“The course opened my eyes to the interwoven relationship that positive psychology has with business in today’s world. JCU’s lecturers and support systems helped me reach my full potential in the face of adversity. The generalisation of my skills from the joint degree will allow me to make a difference in people’s lives for the better.”

Shanda Jarrett

BACHELOR OF BUSINESS - BACHELOR OF PSYCHOLOGICAL SCIENCE

C
O



, t n $\frac{1}{\sigma}$ n l_σ σ l n_{σσ} nf $\frac{1}{\sigma}$ n σ l . n

